

ANNUAL REPORT 2019-2020

LiverWELL[®]

Incorporating Hepatitis Victoria

Contents

Achievement by numbers in 2019-20	1
Who we are/Our vision/Hepatitis Victoria/LiverWELL Board	3
President's Report	5
CEO's Report	7
The year in review	9
Priority 1	9
Priority 2	11
Priority 3	13
Priority 4	15
Priority 5	17
Financials	20
Statement of financial profit and loss	23
Statement of financial position	24
Statement of changes in equity/Statement of cash flows	25
Notes to the financial statements	26
LiverWELL Limited Director's declaration	32
Independent auditor's report to the members	33
Thank you to our supporters	36

Achievements by numbers

Queries responded to



Education sessions



Digital engagement



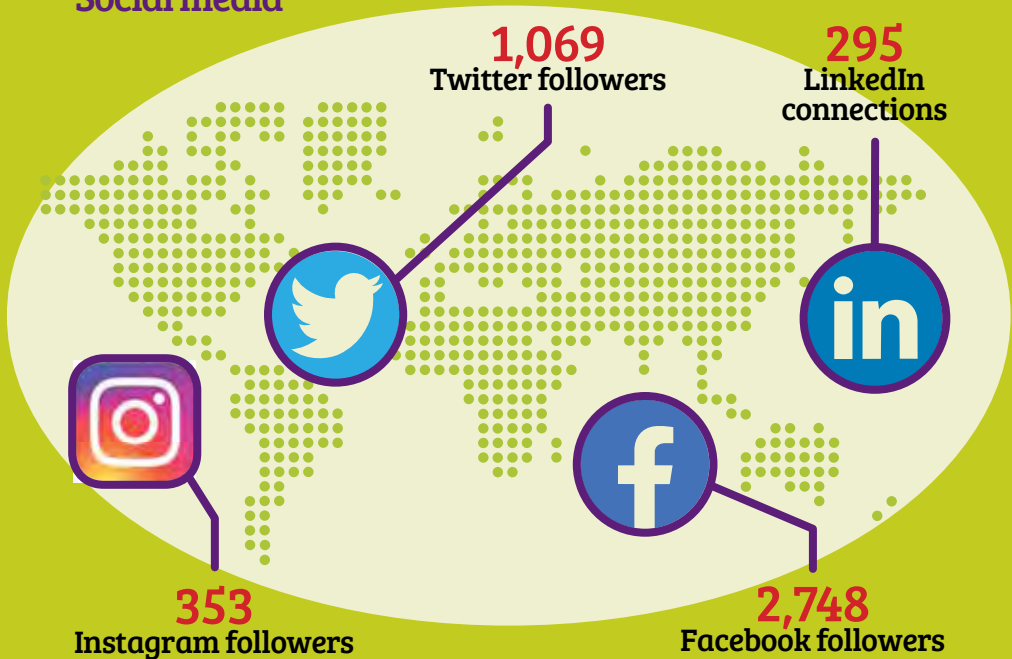
7,898
podcast plays



48
HEPChat
e-newsletters

delivered to
94,000
recipients

Social media



353
Instagram followers

1,069
Twitter followers

295
LinkedIn
connections

2,748
Facebook followers



Who we are

Hepatitis Victoria/LiverWELL® is the peak not-for-profit community organisation working across the state for people affect by, or at risk of viral hepatitis and liver disease.



Our vision

Better liver health for Victorians, free from hepatitis and stigma.



Hepatitis Victoria LiverWELL Board



Frank Carlus (President and Chair, Nominations Committee)

Frank is a former state public servant with over 32 years' experience in the Department of Human Services/Department of Health. In that time he worked in direct care, policy and senior management positions across a range of services.



Jennifer MacLachlan (Vice President)

Jennifer is an epidemiologist with the WHO Collaborating Centre for Viral Hepatitis, Victorian Infectious Diseases Reference Laboratory based at The Doherty Institute, Melbourne. She has postgraduate degrees in biological science and epidemiology and has helped develop clinical guidelines and government policy at a state, national and international levels.



Donna Ribton-Turner (Chair, Governance and Strategy Committee)

Donna has extensive experience in the health sector including in hospitals in Australia and overseas, including mental health and alcohol and other drug services.

She has held senior management roles in DHHS and not for profit organisations. Donna is a retired registered nurse (general and psychiatric) with qualifications, experience and an interest in women's health.

 **Ross Williams**

Ross worked as a psychology academic until he was diagnosed with hepatitis C in 2006. Two liver transplants and four interferon treatments later, today the virus is no longer detectable. Ross brings his strong interest in issues in treatment and transplantation.

 **Nicole Allard**

Nicole is a GP in a community health centre. Her areas of interest include refugee health, hepatitis B community care, and working with CALD communities. She has initiated a hepatitis B clinic with support from the Integrated Hepatitis B service at the Royal Melbourne Hospital.

 **Kieran Donoghue** (Treasurer and Chair, Finance and Risk Committee)

Kieran is General Manager, Policy at an industry advocacy organisation. Prior to this he qualified as a chartered accountant with Deloitte in London and spent several years in a variety of finance roles at international companies.

 **Jarrold McMaugh**

Jarrold is a primary care pharmacist with a specific interest in liver health, harm minimisation, and reducing stigma in healthcare.

 **Eddie Micallef**

Eddie is currently Chair of the Ethnic Communities Council of Victoria, Chair's the ECCV Health Committee and their Drugs Task Force and is a member of the Inner South Community Health Centre Board of Management. Previously a Victorian parliamentarian, he was a member of its Drugs and Crime Committee.

 **Phoebe Trinidad**

Phoebe is a nurse specialising in liver disease in both the acute and community settings. Phoebe has a background in international health and is passionate about delivering health care that is therapeutic, accessible and sustainable.

President's Report



Frank Carlus

It is with pleasure and a great deal of satisfaction that on behalf of our Board I report to you on our organisation's achievements and challenges. Looking back on 2019-20 it is important to acknowledge that much happened before the focus shifted to COVID-19 and I take this opportunity to reflect on some of those achievements.

Partnerships and collaborations have again been at the heart of Hepatitis Victoria/LiverWELL's work. In early 2019 a new and exciting partnership was formed with the Rotary Club of Melbourne. End Hepatitis Now! has provided the opportunity for presentations at Rotary Club meetings, educating Rotarians about viral hepatitis. Such has been the success that the partnership will expand to cover clubs in regional Victoria in the coming year.

Our journey towards supporting the broader liver health of all Victorians also advanced this year, with the completion of a number of liver-related initiatives, including successfully advocating for liver cancer to be prioritized in the Victorian Government cancer plan, expanding the LiverWELL suite of resources, and featuring the LiverWELL brand in equal prominence with the Hepatitis Victoria brand across our external facing resources and information.

The dual branding stage is an important outward facing demonstration of the expansion of our remit to advocating for and supporting the broad range of liver health related issues faced by Victorians. While providing assurance that in doing so we will not forget nor lose touch with our deeply held conviction to support the needs of those living with, or at risk of viral hepatitis.

The year will forever be remembered for the COVID-19 pandemic which has challenged us as individuals, communities, and organisations in ways we never imagined, including in our personal and working lives.

At Hepatitis Victoria/LiverWELL I'm pleased to report that these challenges are being met with clear leadership, a willingness to adapt, and a steadfast commitment to continue to support those affected by or at risk of viral hepatitis and liver disease.


Adapting to an environment where face-to-face interactions were no longer possible provided the opportunity for innovation to flourish. Where possible our programs were successfully transitioned to online delivery and importantly have been very well evaluated by those who have attended.

Into the future, this additional online capability will provide an added strength that will work to complement the traditional face-to-face program delivery model. The ability of online delivery to expand our reach has been a positive outcome that we will look to harness going forward.

Almost immediately a need was identified to provide those living with viral hepatitis and other liver conditions reliable, trusted advice about the potential impact of COVID-19 on their unique circumstances. We moved quickly to develop a web information portal that houses a range of up-to-date resources and links to trusted information sources. Since launching, this section of the website has proven popular.

Work conducted by The Peter Doherty Institute in their 2018-19 Viral Hepatitis Mapping Report has found since the pandemic started there has been a decline in testing for hepatitis B. At the time of the report it did not appear to be followed by a decline in treatments provided. Similarly, while it seems that scripts for hepatitis C treatments are being dispensed consistently pre and during the pandemic, the numbers of tests being conducted had also reduced. We are alert to the potential longer-term impacts on the current reduction in testing levels for both hepatitis B and C and will monitor this situation as time passes.

Many have contributed to this year's achievements. Once again, our wonderful volunteers have provided their time, skills and enthusiasm to drive the organisation forward. Their passion, commitment and hard work continues to be a source of inspiration and positive impact on the quality of our work. For all these qualities, on behalf of the Board and staff, I send my heartfelt thanks to each and every volunteer.



Introducing online delivery has expanded our reach and we will look to harness this going forward

I wish to acknowledge the Victorian Government and the Department of Health and Human Services for enabling much of our work by funding our core activities during the year. The support and flexibility shown by our key contacts at the Department has been particularly welcome this year as we have attempted to move quickly and decisively to continue our work in an environment that changed considerably as the year progressed.

Thank you once again to my fellow Directors whose combined expertise has guided our organisation through another successful year. As I reflect on our work together it is hard to imagine any group being more motivated to deliver on our mission of improved liver health for all.

I'd like to take this opportunity to particularly acknowledge the significant contributions of two of our Directors who will retire at this year's Annual General Meeting. Jennifer MacLachlan and Ross Williams have both served as Board members since 2015. Their passion and expertise will be sorely missed. At the time of writing the recruitment process has commenced to secure new directors.

In closing, I would also like to recognise the ongoing great work of the Hepatitis Victoria/LiverWELL team, in particular CEO Melanie Eagle, whose leadership, passion and commitment have exceeded expectations once again. Congratulations!

Thank you!





CEO's Report

Melanie Eagle

Reflecting on the last year provides an opportunity to take stock on what has been a remarkable year in so many ways.

In July 2019 it was unfathomable that we would spend months working from home, delivering our programs and services online.

I continue to be impressed with how well Hepatitis Victoria/LiverWELL has adapted, and indeed continues to do so as each new challenge presents.

This willingness to adapt has been embraced across the entire organisation. The transition of our programs and services to an online environment has involved significant contributions and creativity from staff, volunteers, and the Board. All have played key roles in ensuring the important work of raising awareness about the importance of liver health continued throughout the entire year.

This year, once again our amazing volunteers have been central to our achievements. Together they have provided over 1,200 hours of tangible support, working on campaigns, translating materials, staffing stands, providing insights and access to their communities, and so much more. For all they do on behalf of myself and the entire team, I offer my heartfelt thanks.

Our army of HEP Heroes continue to grow and now includes Rotary members and mayors from councils across the state. Rotarians have taken up the mantle to partner with us in a campaign entitled End Hep Now!



Sharing a lived experience perspective of viral hepatitis or a chronic liver condition continues to be an important mechanism to challenge and change community perceptions. HEPspeakers have shared their stories throughout the year and have been supported to continue to do so using a range of digital platforms.

Even before there was a necessity to look to online solutions, advances had been made in this area with the launch of web chat functionality. This service complements the long-running and highly successful Hepatitis Infoline.

Another of the year's highlights included an advocacy and awareness campaign that provided easy to understand information about the changes to how the Commonwealth Government assesses visa applications for people living with chronic viral hepatitis.



Our army of HEP Heroes continue to grow and include Rotary members and mayors from councils across the state

Collaborating with subject matter experts including migration lawyers, health practitioners, and people with personal experience of viral hepatitis and applying for Australian visas, produced a tailored suite of resources to help empower people to navigate this complex process.

As part of our strategy to continue to build efficacy in the broader liver health space, our inaugural World Liver Day campaign #KindToYourLiver in April 2020 was launched. Conducted entirely online it saw stakeholders and community members share via social media their liver healthy choices, providing their thoughts on things like exercise and diet.

Going forward we will continue to focus our efforts on increasing awareness of the importance of good liver health, providing tools and education to help encourage positive choices in this area. This work will be informed by the findings from our REVEAL and COVID-19 and Liver Health surveys that ask the community and health care workforce for their thoughts about the range of challenges associated with managing liver disease both in general and during the pandemic. This information will inform our approach in 2020-21.

In the coming months you'll see some changes in the way we present our organisation, the Hepatitis Infoline will be rebranded the LiverLine, our website will undergo a refresh, and our programs will be enhanced to support the broader liver health remit.

In closing, on behalf of everyone at Hepatitis Victoria/LiverWELL I'd like to convey our best wishes for everyone's continued safety in the months ahead and confirm our commitment to continuing the important work to improve the liver health of all Victorians.

The year in review

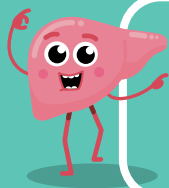
Focusing on five key priorities drives our activities each year. The following highlights some key achievements in 2019-20.

See our [2019-20 Report Card](#) on our website for a detailed list of achievements.



Priority 1: Improve liver health

Our commitment is to



- lead the community response and driving awareness in relation to liver disease.
- assist people to understand and manage their liver health.
- improve public understanding of how to prevent liver disease.
- advocate for an increased investment in, and expanded response to, liver health.

Highlights this year:

2019 World Hepatitis Day LIVERability Festival

This year the annual grants program that provides funding to community and not-for-profit organisations to hold awareness raising events about viral hepatitis and liver disease supported a record number of events. Up to 1,000 people attended 20 events across the state - from Echuca in the north, to Geelong in the south, and many places in between.

#KindToYourLiver campaign

Social media was employed to encourage people to share their liver care in lockdown tips. This was our first campaign conducted solely via social media. It provided tips and strategies based around the four Living Well domains, Eating Well, Feeling Well, Drink Aware and Getting Active.

COVID-19 and liver health web portal

A web portal was developed to provide reliable, up-to-date information for people with liver health conditions during the pandemic. It continues to prove popular with web visitors.



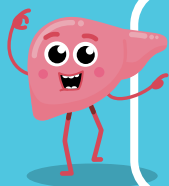
LIVERABILITY

Up to 1,000 people attended
20 events across the state
from Echuca in the north
to Geelong in the south



Priority 2: Support and mobilise those affected

Our commitment is to



- resource the advocacy and leadership of people affected by liver disease.
- provide information and support for people affected by liver disease.
- facilitate and supporting peer-led responses within affected communities.
- ensure the voice of lived experience drives Hepatitis Victoria/LiverWELL's work.

Highlights this year:

Live stream panel discussion, "Hepatitis, Vaccination and COVID-19" attracted over **10,000 views**.

The broadcast, conducted in Vietnamese provided information and answered audience questions in our inaugural FaceBook live streamed event. The recording hosted on our FaceBook page continues to attract significant views.

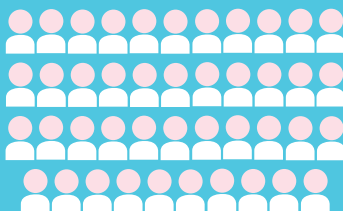
Web chat functionality

Providing another avenue for people to better understand liver health conditions, the introduction of web chat has been very well received.

HEPSpeak program went virtual

HEPSpeak lived experience speakers trained and supported to present at online events. **Forty-three** lived experience speakers presented to **1,835** people throughout the year.

43 Lived experience speakers



presentations to
1,835
people



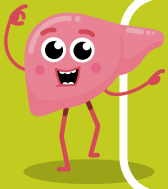
functionality

Another avenue for people
to better understand
liver health conditions

Webchat



Priority 3: Stop stigma



Our commitment is to

- Reduce stigma and discrimination by improving understanding within affected communities.
- Improve awareness and responsiveness in the wider community.
- Reduce the impact of stigma by building resilience and offering support.

Highlights this year:

End Hepatitis Now! Partnership with the Rotary Club of Melbourne

An exciting partnership with the Rotary Club of Melbourne has seen staff and HEPSpeak lived experience presenters attend 27 meetings, to almost 500 members. Seven new HEPHeroes have also been recruited from the Rotary ranks.

StreetShot Youth Arts Program

StreetShot youth program is a unique initiative that engages young people. Participants create an arts project of their choice, to represent their understandings of viral hepatitis, and to communicate what they think other young people need to know. This year, 22 education sessions were delivered in 15 schools, reaching 428 young people.



STREET SHOT

StreetShot youth program
is a unique initiative that
engages young people

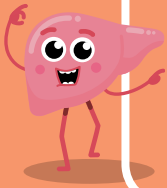


2019 StreetShot Exhibition attendees



Priority 4: Promote responsive health

Our commitment is to



- Increase the knowledge and willingness of community and health care workers to respond to liver disease.
- Advocate for equity of access to health services, for all, especially key affected communities.
- Promote integrated and person-centred health care for liver disease.
- Drive the increased capacity of target workforces in a sustainable manner.

Highlights this year:

Online sessions conducted for pharmacy and dentistry students

HEPReady Essentials training was delivered to pharmacy and dentistry students as part of their curriculum. Being able to include this education as part of their studies aims to help increase their understanding of viral hepatitis and inform their development as practitioners.

TEST CURE LIVE campaign

This campaign delivered information and resources about hepatitis C to the Victorian Indian community. Conducted over six months, using social media and programmatic advertising it recorded over **187,000 impressions** of Facebook/Instagram posts and more than **two million views** of the **13 digital content pieces** of programmatic advertising. Residents of Melbourne's West received letterbox drops which included a hepatitis C resource with an interactive quiz.



187,000
impressions



2,000,000
views



13 products of
digital advertising





Equity of access to
health services for all

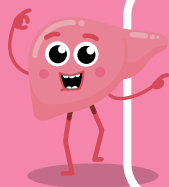
Health care for

Liver Disease



Priority 5: Drive organisational change

Our commitment is to:



- Actively respond to changing environments, including new knowledge and technologies.
- Collaborate effectively and strategically across diverse sectors and communities.
- Ensure a sustainable, viable and agile organisation.
- Attract and retain talented and high-performing staff.

Highlights this year:

- Collaborated on joint submissions and advocacy activities.
- Contributed to Victorian Government forums in relation to blood-borne viruses, including the hepatitis A outbreak and COVID-19 related issues.
- Secured project funding from government and non-government sources to expand capacity in relation to migrant and refugee communities, AOD workforce capacity building, and digital tool enhancement.

Refer to the 2019-20 Report Card available at www.hepvic.org.au for detailed list of achievements.

REPORT



In late 2019, the Australian Institute for Primary Care and Ageing at La Trobe University delivered four detailed evaluation reports about our programs. They revealed the breadth, depth and creativity of the work being undertaken in communities throughout Victoria which touches thousands of people by raising awareness about the need to tackle viral hepatitis and liver disease more broadly. Please [visit our website](#) to view the reports.

Collaborate effectively and strategically across diverse sectors and communities

Migrant and Refugee Communities





Financials

LiverWELL Limited
ABN 48 656 812 701

Directors' report 30 June 2020

The directors present their report, together with the financial statements, on the company for the year ended 30 June 2020.

Directors

The following persons were directors of the company during the whole of the financial year and up to the date of this report, unless otherwise stated:

Nicole L. Allard
Frank M. Carlus
Kieran J. Donoghue
Ian R. Gracie (resigned July 2019)
Jennifer H. McLachlan
Jarrod D. McMaugh
Edward J. Micallef
Donna J. Ribton-Turner
Phoebe G. Trinidad
Charles R. Williams

Principal activities

The principal activities of the company during the financial period were: Working for Victorians affected by or at risk of Viral Hepatitis and providing information and a number of support programs and support facilities for both individuals and organisations.

The activities of Hepatitis Victoria Inc were transferred to this entity on 5 July 2019, which is the date that the company was incorporated.

Meetings of directors

The number of meetings of the company's Board of Directors ('the Board') held during the year ended 30 June 2020, and the number of meetings attended by each director were:

Full Board

	Held*	Attended
Nicole L. Allard	8	6
Frank M. Carlus	8	8
Kieran J. Donoghue	8	6
Ian R. Gracie	1	—
Jennifer H. McLachlan	8	7
Jarrod D. McMaugh	8	5
Edward J. Micallef	8	7
Donna J. Ribton-Turner	8	8
Phoebe G. Trinidad	8	6
Charles R. Williams	8	8

*Held: represents the number of meetings held during the time the director held office.

Contributions on winding up

In the event of the company being wound up, ordinary members are required to contribute a maximum of \$10 each. Honorary members are not required to contribute.

The total amount that members of the company are liable to contribute if the company is wound up is \$320, based on 32 current ordinary members.

Auditor's independence declaration

A copy of the auditor's independence declaration as required under section 307C of the Corporations Act 2001 is set out immediately after this directors' report.

This report is made in accordance with a resolution of directors, pursuant to section 298(2)(a) of the Corporations Act 2001.



Frank Carlus
1 October 2020



Kieran Donoghue

Director:
A.R Ager CA, BEc
Registered Company Auditor

Assur Pty. Ltd.
PO Box 587
Level 1, 189 Coleman Parade,
Glen Waverley, VIC 3150
ABN, 78 167 481 834
T: +61 (3) 9561 6311
M: +61 419 541 727
F: +61 (3) 9562 5965
E: tony.ager@optusnet.com.au

Authorised Audit Company
No. 453122

LiverWELL Limited

Auditor's Independence Declaration

UNDER SECTION 307C OF THE CORPORATIONS ACT 2001

I declare that, to the best of my knowledge and belief, during the year ended 30 June 2020 there have been:

- (i) no contraventions of the auditor independence requirements as set out in the Corporations Act 2001 or the Australian Charities and Not-for-profits Commission Act 2012 in relation to the Audit;
and
- (ii) no contraventions of any applicable code of professional conduct in relation to the audit.

ASSUR PTY. LTD
ASSUR PTY LTD
Authorised Audit Company Number: 453122
Chartered Accountants



Anthony Ager
Director - Audit & Assurance
Chartered Accountant

Dated: 28 SEPTEMBER, 2020

The accompanying notes form part of these financial statements.

General information

The financial statements cover LiverWELL Limited as an individual entity. The financial statements are presented in Australian dollars, which is LiverWELL Limited's functional and presentation currency. Suite 5, 200-204 Sydney Road, Brunswick Victoria 3056

The financial statements were authorised for issue, in accordance with a resolution of directors, on 28 September 2020. The directors have the power to amend and reissue the financial statements.

Statement of profit or loss and other comprehensive income

For the year ended 30 June 2020

	Note	2020 \$
Revenue	3	1,709,622
Interest revenue calculated using the effective interest method		16,279
Expenses		
Corporate and administration expenses		(211,338)
Employee benefits expense		(1,170,318)
Depreciation and amortisation expense		(29,065)
Other expenses		(201,053)
Surplus before income tax expense		114,127
Income tax expense		—
Surplus after income tax expense for the year attributable to the members of LiverWELL Limited		114,127
Other comprehensive income for the year, net of tax		—
Total comprehensive income for the year attributable to the members of LiverWELL Limited		114,127

The above statement of profit or loss and other comprehensive income should be read in conjunction with the accompanying notes.

Statement of financial position

As at 30 June 2020

	Note	2020 \$
Assets		
Current assets		
Cash and cash equivalents	4	830,437
Trade and other receivables	5	34,075
Financial assets	6	637,155
Other	7	2,014
Total current assets		1,503,681
Non-current assets		
Property, plant and equipment	8	131,872
Total non-current assets		131,872
Total assets		1,635,553
Liabilities		
Current liabilities		
Trade and other payables	9	147,183
Employee benefits	10	104,890
Other	11	487,788
Total current liabilities		739,861
Non-current liabilities		
Employee benefits	12	31,868
Total non-current liabilities		31,868
Total liabilities		771,729
Net assets		863,824
Equity		
Contribution at inception		749,697
Retained surpluses		114,127
Total equity		863,824

The above statement of financial position should be read in conjunction with the accompanying notes.

Statement of changes in equity

For the year ended 30 June 2020

	Contribution at inception	Retained profits	Total equity
Balance at 5 July 2019	–	–	–
Surplus after income tax expense for the year	–	114,127	114,127
Other comprehensive income for the year, net of tax	–	–	–
Total comprehensive income for the year	–	114,127	114,127
Contribution at inception	749,697	–	749,697
Balance at 30 June 2020	749,697	114,127	863,824

Statement of cash flows

For the year ended 30 June 2020

	Note	2020 \$
Cash flows from operating activities		
Receipts from operations		1,895,562
Payments to suppliers and employees (inclusive of GST)		(1,645,831)
		249,731
Interest received		13,252
Net cash from operating activities	14	262,983
Cash flows from investing activities		
Payments for property, plant and equipment		(50,649)
Cash transferred at inception		324,272
Proceeds from term deposits		293,831
Net cash from investing activities		567,454
Net cash from financing activities		–
Net increase in cash and cash equivalents		830,437
Cash and cash equivalents at the beginning of the financial year		–
Cash and cash equivalents at the end of the financial year	4	830,437

Notes to the financial statements 30 June 2020

Note 1. Significant accounting policies

The principal accounting policies adopted in the preparation of the financial statements are set out below.

New or amended Accounting Standards and Interpretations adopted

The company has adopted all of the new or amended Accounting Standards and Interpretations issued by the Australian Accounting Standards Board ('AASB') that are mandatory for the current reporting period.

Any new or amended Accounting Standards or Interpretations that are not yet mandatory have not been early adopted.

Reporting Period

The company was incorporated on 5 July 2019. The report covers the period from that date until 30 June 2020, and for that reason does not include comparative information.

Basis of preparation

In the directors' opinion, the company is not a reporting entity because there are no users dependent on general purpose financial statements.

These are special purpose financial statements that have been prepared for the purposes of complying with the Australian Charities and Not-for-profits Commission Act 2012 and Victorian legislation the Fundraising Act 1998 and associated regulations and the Corporations Act 2001 requirements to prepare and distribute financial statements to the members of LiverWELL Limited. The directors have determined that the accounting policies adopted are appropriate to meet the needs of the members of LiverWELL Limited.

These financial statements have been prepared in accordance with the recognition and measurement requirements specified by the Australian Accounting Standards and Interpretations issued by the Australian Accounting Standards Board ('AASB') and the disclosure requirements of AASB 101 'Presentation of Financial Statements', AASB 107 'Statement of Cash Flows', AASB 108 'Accounting Policies, Changes in Accounting Estimates and Errors', AASB 1048 'Interpretation of Standards' and AASB 1054 'Australian Additional Disclosures', as appropriate for not-for profit oriented entities.

Historical cost convention

The financial statements have been prepared under the historical cost convention, except for, where applicable, the revaluation of financial assets and liabilities at fair value through profit or loss, financial assets at fair value through other comprehensive income, investment properties, certain classes of property, plant and equipment and derivative financial instruments.

Critical accounting estimates

The preparation of the financial statements requires the use of certain critical accounting estimates. It also requires management to exercise its judgement in the process of applying the company's accounting policies. The areas involving a higher degree of judgement or complexity, or areas where assumptions and estimates are significant to the financial statements, are disclosed in note 2.

Revenue recognition

The company recognises revenue as follows:

Rendering of services

Revenue from rendering of services is recognised upon delivery of the service.

Donations and other revenue

Revenue from grants, donations and other sources are recognised when the right to receive them is established.

Interest

Interest revenue is recognised as interest accrues using the effective interest method.

Donations and other revenue

Other revenue is recognised when it is received or when the right to receive payment is established.

Grants

Revenue from grants is recognised in accordance with AASB 120.

Income tax

As the company is a charitable institution in terms of subsection 50-5 of the Income Tax Assessment Act 1997, as amended, it is exempt from paying income tax.

Current and non-current classification

Assets and liabilities are presented in the statement of financial position based on current and non-current classification.

An asset is classified as current when: it is either expected to be realised or intended to be sold or consumed in the company's normal operating cycle; it is held primarily for the purpose of trading; it is expected to be realised within 12 months after the reporting period; or the asset is cash or cash equivalent unless restricted from being exchanged or used to settle a liability for at least 12 months after the reporting period. All other assets are classified as non-current. A liability is classified as current when: it is either expected to be settled in the company's normal operating cycle; it is held primarily for the purpose of trading; it is due to be settled within 12 months after the reporting period; or there is no unconditional right to defer the settlement of the liability for at least 12 months after the reporting period. All other liabilities are classified as non-current.

Cash and cash equivalents

Cash and cash equivalents includes cash on hand, deposits held at call with financial institutions, other short-term, highly liquid investments with original maturities of three months or less that are readily convertible to known amounts of cash and which are subject to an insignificant risk of changes in value.

Trade and other receivables

Trade receivables are initially recognised at fair value and subsequently measured at amortised cost using the effective interest method, less any allowance for expected credit losses. Trade receivables are generally due for settlement within 30 days.

The company has applied the simplified approach to measuring expected credit losses, which uses a lifetime expected loss allowance. To measure the expected credit losses, trade receivables have been grouped based on days overdue.

Other receivables are recognised at amortised cost, less any allowance for expected credit losses.

Property, plant and equipment

Plant and equipment is stated at historical cost less accumulated depreciation and impairment. Historical cost includes expenditure that is directly attributable to the acquisition of the items.

Depreciation is calculated on a straight-line basis to write off the net cost of each item of property, plant and equipment (excluding land) over their expected useful lives as follows:

Leasehold improvements	4 years
Plant and equipment	4 years
Motor vehicles	4 years

The residual values, useful lives and depreciation methods are reviewed, and adjusted if appropriate, at each reporting date.

Leasehold improvements are depreciated over the unexpired period of the lease or the estimated useful life of the assets, whichever is shorter.

An item of property, plant and equipment is derecognised upon disposal or when there is no future economic benefit to the company. Gains and losses between the carrying amount and the disposal proceeds are taken to profit or loss.

Trade and other payables

These amounts represent liabilities for goods and services provided to the company prior to the end of the financial year and which are unpaid. Due to their short-term nature they are measured at amortised cost and are not discounted. The amounts are unsecured and are usually paid within 30 days of recognition.

Employee benefits

Short-term employee benefits

Liabilities for wages and salaries, including non-monetary benefits, annual leave and long service leave expected to be settled wholly within 12 months of the reporting date are measured at the amounts expected to be paid when the liabilities are settled.

Other long-term employee benefits

The liability for annual leave and long service leave not expected to be settled within 12 months of the reporting date are measured at the present value of expected future payments to be made in respect of services provided by employees up to the reporting date using the projected unit credit method. Consideration is given to expected future wage and salary levels, experience of employee departures and periods of service. Expected future payments are discounted using market yields at the reporting date on national government bonds with terms to maturity and currency that match, as closely as possible, the estimated future cash outflows.

Contribution at inception

This represent the net assets of Hepatitis Victoria Inc transferred to the new structure on incorporation.

Goods and Services Tax ('GST') and other similar taxes

Revenues, expenses and assets are recognised net of the amount of associated GST, unless the GST incurred is not recoverable from the tax authority. In this case it is recognised as part of the cost of the acquisition of the asset or as part of the expense.

Receivables and payables are stated inclusive of the amount of GST receivable or payable. The net amount of GST recoverable from, or payable to, the tax authority is included in other receivables or other payables in the statement of financial position.

Cash flows are presented on a gross basis. The GST components of cash flows arising from investing or financing activities which are recoverable from, or payable to the tax authority, are presented as operating cash flows.

Commitments and contingencies are disclosed net of the amount of GST recoverable from, or payable to, the tax authority.

New Accounting Standards and Interpretations not yet mandatory or early adopted

Australian Accounting Standards and Interpretations that have recently been issued or amended but are not yet mandatory, have not been early adopted by the company for the annual reporting period ended 30 June 2020. The company has not yet assessed the impact of these new or amended Accounting Standards and Interpretations.

Note 2. Critical accounting judgements, estimates and assumptions

The preparation of the financial statements requires management to make judgements, estimates and assumptions that affect the reported amounts in the financial statements. Management continually evaluates its judgements and estimates in relation to assets, liabilities, contingent liabilities, revenue and expenses. Management bases its judgements, estimates and assumptions on historical experience and on other various factors, including expectations of future events, management believes to be reasonable under the circumstances. The resulting accounting judgements and estimates will seldom equal the related actual results. The judgements, estimates and assumptions that have a significant risk of causing a material adjustment to the carrying amounts of assets and liabilities (refer to the respective notes) within the next financial year are discussed below.

Estimation of useful lives of assets

The company determines the estimated useful lives and related depreciation and amortisation charges for its property, plant and equipment and finite life intangible assets. The useful lives could change significantly as a result of technical innovations or some other event. The depreciation and amortisation charge will increase where the useful lives are less than previously estimated lives, or technically obsolete or non-strategic assets that have been abandoned or sold will be written off or written down.

Employee benefits provision

As discussed in note 1, the liability for employee benefits expected to be settled more than 12 months from the reporting date are recognised and measured at the present value of the estimated future cash flows to be made in respect of all employees at the reporting date. In determining the present value of the liability, estimates of attrition rates and pay increases through promotion and inflation have been taken into account.

	2020
	\$
Note 3. Revenue	
Grants	1,642,026
Donations	8,165
Fees for services	8,405
Other income	51,026
Revenue	<u>1,709,622</u>
Note 4. Current assets - cash and cash equivalents	
Cash on hand	271
Cash at bank	515,166
Cash on deposit	315,000
	<u>830,437</u>
Note 5. Current assets - trade and other receivables	
Trade receivables	31,048
Interest receivable	3,027
	<u>34,075</u>
Note 6. Current assets - financial assets	
Deposits with over 3 months to maturity	<u>637,155</u>
Note 7. Current assets - other	
Prepayments	<u>2,014</u>
Note 8. Non-current assets - property, plant and equipment	
Leasehold improvements - at cost	23,983
Less: Accumulated depreciation	(23,983)
	<u>-</u>
Fixtures and fittings - at cost	151,967
Less: Accumulated depreciation	(89,249)
	<u>62,718</u>
Motor vehicles - at cost	80,056
Less: Accumulated depreciation	(10,902)
	<u>69,154</u>
	<u>131,872</u>
Note 9. Current liabilities - trade and other payables	
Trade payables	20,557
BAS payable	33,868
Other payables	92,758
	<u>147,183</u>
Note 10. Current liabilities - employee benefits	
Employee benefits	<u>104,890</u>

	2020
	\$
Note 11. Current liabilities - other	
Revenue and grants received in advance	487,788
Note 12. Non-current liabilities - employee benefits	
Employee benefits	31,868
Note 13. Events after the reporting period	
No matter or circumstance has arisen since 30 June 2020 that has significantly affected, or may significantly affect the company's operations, the results of those operations, or the company's state of affairs in future financial years.	
Note 14. Reconciliation of surplus after income tax to net cash from operating activities.	
Surplus after income tax expense for the year	114,127
Adjustments for:	
Depreciation and amortisation	29,065
Change in operating assets and liabilities:	
Increase in trade and other receivables	(11,205)
Decrease in prepayments	5,257
Decrease in trade and other payables	(84,559)
Increase in employee benefits	16,180
Increase in other operating liabilities	194,118
Net cash from operating activities	262,983

LiverWELL Limited Directors' declaration 30 June 2020

In the directors' opinion:

- the company is not a reporting entity because there are no users dependent on general purpose financial statements. Accordingly, as described in note 1 to the financial statements, the attached special purpose financial statements have been prepared for the purposes of complying with the Australian Charities and Not-for-profits Commission Act 2012 and Victorian legislation the Fundraising Act 1998 and associated regulations and the Corporations Act 2001 requirements to prepare and distribute financial statements to the members of LiverWELL Limited;
- the attached financial statements and notes comply with the Corporations Act 2001, the Accounting Standards as described in note 1 to the financial statements, the Corporations Regulations 2001 and other mandatory professional reporting requirements;
- the attached financial statements and notes give a true and fair view of the company's financial position as at 30 June 2020 and of its performance for the financial year ended on that date; and
- there are reasonable grounds to believe that the company will be able to pay its debts as and when they become due and payable.

Signed in accordance with a resolution of directors made pursuant to section 295(5)(a) of the Corporations Act 2001.

On behalf of the directors



Frank Carlus



Kieren Donoghue

1 October 2020

Director:
A.R. Ager CA, BEC
Registered Company Auditor

Assur Pty. Ltd.
PO Box 557
Level 1, 189 Coleman Parade,
Glen Waverley, VIC 3150
ABN: 78 167 481 834
T: +61 (3) 9561 6311
M: +61 419 541 727
F: +61 (3) 9562 5965
E: tony.ager@ootusnet.com.au

Authorised Audit Company
No. 453122

Report on the Audit of the Financial Report

Opinion

We have audited the financial report of LiverWELL Limited (the Company), which comprises the Statement of Financial Position as at 30 June 2020, the Statement of Comprehensive Income, the Statement of Changes in Equity and the Statement of Cash Flows for the year then ended, and notes to the financial statements, including a summary of significant accounting policies, and the Director's Declaration.

In our opinion, the accompanying financial report of LiverWELL Limited is in accordance with the Corporations Act 2001 and the Australian Charities and Not-for-profits Commission Act 2012, including:

- giving a true and fair view of the company's financial position as at 30 June 2020 and of its performance for the year then ended; and
- complying with Australian Accounting Standards to the extent described in Note 1, and the Corporations Regulations 2001.

Basis for Opinion

We conducted our audit in accordance with Australian Auditing Standards. Our responsibilities under those standards are further described in the Auditor's Responsibilities for the Audit of the Financial Report section of our report. We are independent of the company in accordance with the auditor independence requirements of the Corporations Act 2001, the Australian Charities and Not-for-profits Commission Act 2012 and the ethical requirements of the Accounting Professional and Ethical Standards Board's APES 110 Code of Ethics for Professional Accountants (the Code) that are relevant to our audit of the financial report in Australia. We have also fulfilled our other ethical responsibilities in accordance with the Code.

We confirm that the independence declaration required by the Corporations Act 2001 and the Australian Charities and Not-for-profits Commission Act 2012, which has been given to the director of the company, would be in the same terms if given to the director as at the time of this auditor's report.

We believe that the audit evidence we have obtained is sufficient and appropriate to provide a basis for our opinion.

Emphasis of Matter – Basis of Accounting

We draw attention to Note 1 to the financial report, which describes the basis of accounting. The financial report has been prepared for the purpose of fulfilling the director's financial reporting responsibilities under the Corporations Act 2001 and the Australian Charities and Not-for-profits Commission Act 2012. As a result, the financial report may not be suitable for another purpose. Our opinion is not modified in respect of this matter.

Information Other than the Financial Report and Auditor's Report Thereon

The director is responsible for the other information. The other information comprises the information included in the Company's annual report for the year ended 30 June 2020, but does not include the financial report and our auditor's report thereon.

Our opinion on the financial report does not cover the other information and accordingly we do not express any form of assurance conclusion thereon.

Director:
A.R. Ager CA, BCom
Registered Company Auditor

Assur Pty. Ltd.
PO Box 987
Level 1, 189 Coleman Parade
Glen Waverley, VIC 3150
ABN 79 167 461 834
T: +61 (3) 9561 6311
M: +61 419 541 727
P: +61 (3) 9562 5969
E: tony.ager@topstaxnet.com.au

Authorised Audit Company
No. 455122

LiverWELL Limited
ABN 48 656 812 701

Independent Auditor's Report

In connection with our audit of the financial report, our responsibility is to read the other information and, in doing so, consider whether the other information is materially inconsistent with the financial report or our knowledge obtained in the audit or otherwise appears to be materially misstated.

If, based on the work we have performed, we conclude that there is a material misstatement of this other information, we are required to report that fact. We have nothing to report in this regard.

Responsibilities of the Director for the Financial Report

The director of the company is responsible for the preparation of the financial report that gives a true and fair view and has determined that the basis of preparation described in Note 1 to the financial report is appropriate to meet the requirements of the Corporations Act 2001, the Australian Charities and Not-for-profits Commission Act 2012 and is appropriate to meet the needs of the members. The director's responsibility also includes such internal control as the director determines is necessary to enable the preparation of a financial report that gives a true and fair view and is free from material misstatement, whether due to fraud or error.

In preparing the financial report, the director is responsible for assessing the company's ability to continue as a going concern, disclosing, as applicable, matters relating to going concern and using the going concern basis of accounting unless the director either intends to liquidate the company or to cease operations, or has no realistic alternative but to do so.

Auditor's Responsibilities for the Audit of the Financial Report

Our objectives are to obtain reasonable assurance about whether the financial report as a whole is free from material misstatement, whether due to fraud or error, and to issue an auditor's report that includes our opinion. Reasonable assurance is a high level of assurance, but is not a guarantee that an audit conducted in accordance with the Australian Auditing Standards will always detect a material misstatement when it exists. Misstatements can arise from fraud or error and are considered material if, individually or in the aggregate, they could reasonably be expected to influence the economic decisions of users taken on the basis of this financial report.

As part of an audit in accordance with the Australian Auditing Standards, we exercise professional judgment and maintain professional scepticism throughout the audit. We also:

- Identify and assess the risks of material misstatement of the financial report, whether due to fraud or error, design and perform audit procedures responsive to those risks, and obtain audit evidence that is sufficient and appropriate to provide a basis for our opinion. The risk of not detecting a material misstatement resulting from fraud is higher than for one resulting from error, as fraud may involve collusion, forgery, intentional omissions, misrepresentations, or the override of internal control.
- Obtain an understanding of internal control relevant to the audit in order to design audit procedures that are appropriate in the circumstances, but not for the purpose of expressing an opinion on the effectiveness of the company's internal control.
- Evaluate the appropriateness of accounting policies used and the reasonableness of accounting estimates and related disclosures made by the director.

Director:
A.R. Agar CA, BSc
Registered Company Auditor

Assur Pty. Ltd.
PO Box 987
Level 1, 185 Colerain Parade,
Clen Waverley, VIC 3150
ABN: 78 167 481 834
T: +61 (3) 9561 6311
M: +61 419 541 727
F: +61 (3) 9562 5965
E: tony.ager@optusnet.com.au

Authorised Audit Company
No. 453122

LiverWELL Limited
ABN 48 656 812 701

Independent Auditor's Report

- Conclude on the appropriateness of the director's use of the going concern basis of accounting and, based on the audit evidence obtained, whether a material uncertainty exists related to events or conditions that may cast significant doubt on the company's ability to continue as a going concern. If we conclude that a material uncertainty exists, we are required to draw attention in our auditor's report to the related disclosures in the financial report or, if such disclosures are inadequate, to modify our opinion. Our conclusions are based on the audit evidence obtained up to the date of our auditor's report. However, future events or conditions may cause the company to cease to continue as a going concern.

- Evaluate the overall presentation, structure and content of the financial report, including the disclosures, and whether the financial report represents the underlying transactions and events in a manner that achieves fair presentation.

We communicate with the director regarding, among other matters, the planned scope and timing of the audit and significant audit findings, including any significant deficiencies in internal control that we identify during our audit.

Signed on: 1 OCTOBER 2020

ASSUR PTY LTD.
ASSUR PTY LTD
Authorised audit Company Number: 453122
Chartered Accountants



Anthony Agar
Director - Audit & Assurance
Chartered Accountants





Thank you to our supporters

Brimbank City Council

- Reducing Hep B Health Inequalities in the Vietnamese Community
- Fit for Cure

Burnet Institute EC Partnership – Fit pack stickers

Chinese Health Promotion Coalition project

- Australian Chinese Medical Association of Victoria
- Chinese Cancer and Chronic Illness Society of Victoria
- Chinese Community Council of Australia – Victorian Chapter
- Chinese Community Health Advisory of Australia
- Chinese Professional and Business Association
- City of Melbourne
- Federation of Chinese Associations
- Jade Ribbon Health Promotion Team
- OSTAR International Media Group
- Victoria Soong Ching Ling Foundation

City of Yarra - LiverWELL4Community

Country Awareness Network

Department of Health and Human Services

- Core funding, Community Participation and Health Promotion project
- Hepatitis B Community Engagement and Vaccination Project
- HEPReady® Regional forums
- HEPReady® AOD Workforce Development training

Fisher Leadership – External expert on Board Nominations Committee

GILEAD Pharmaceutical – NASH resource development

GSK Pharmaceuticals – Living Well with Hep B animations

Lisa O’Farrell, Melbourne Polytechnic – Living Well with Hepatitis B AMEP program

Continued over page

Maria Marshall and Bruce Hurst, their family and friends

– Continuing work in the broader liver health field

Melbourne Polytechnic – StreetShot event

Moreland City Council – B-Understood

Rotary Club of Melbourne – End Hepatitis Now! project

Test Cure Live project

- Australian India Society of Victoria
- Federation of Indian Associations of Victoria
- Federation of Indian Music and Dance Victoria
- Hepatitis Australia
- Indian Senior Citizens Association of Victoria Inc
- Mental Health Foundation of Australia
- Northern Region Indian Senior’s Association (Vic.) Inc.

WHO Collaborating Centre for Viral Hepatitis – Victoria Cancer Agency funded collaborative research project: Hepatitis and liver cancer outcomes in general practice: an intervention collaboration (‘HepLOGIC’ project).

We would also like to thank all our individual members and our donors for their support over the year, along with all our organisational members.

LiverWELL[®]

Incorporating Hepatitis Victoria

Suite 5

200 Sydney Road, Brunswick

www.hepvic.org.au

ABN 48 656 812 701